

Oregon School Safety Officers Association

GOSH 2009 Conference March 10 & 11, 2009

Oregon School Safety Officers Association
PO Box 1068 ■ Salem, Oregon ■ 97308 ■ 503-588-2800



School Safety and Health Programs

- Safety Committees
- Hazards Communication
- Personal Protective Equipment
- Equipment Safeguarding
- Bloodborne Pathogens
- Asbestos Management Program
- Lockout – Tagout Program

Oregon School Safety Officers Association
PO Box 1068 ■ Salem, Oregon ■ 97308 ■ 503-588-2800



School Safety and Health Programs

- Confined Space Entry Program
- Fall Protection
- Science Program Safety
- Drama / Theater Program Safety
- Shop Program Safety
- Fire Protection Systems
- Electrical Safety

Oregon School Safety Officers Association
PO Box 1068 ■ Salem, Oregon ■ 97308 ■ 503-588-2800



School Safety and Health Programs

- Fork Lift Safety
- Indoor Air Quality
- Ergonomics
- Playground Environments

Oregon School Safety Officers Association
PO Box 1068 ■ Salem, Oregon ■ 97308 ■ 503-588-2800



Safety Committee Compliance

- Committee Membership
- Monthly Meetings
- Quarterly Inspections



Oregon School Safety Officers Association
PO Box 1068 ■ Salem, Oregon ■ 97308 ■ 503-588-2800



Hazards Communication

- Hazardous Substance Inventory
- Material Safety Data Sheets
- Container Labeling
- Storage and Handling Procedures
- Cleanup and Disposal Procedures
- Emergency / First Aid



WARNING
Intentional misuse by deliberately concentrating, sniffing and inhaling contents can be harmful or fatal. KEEP OUT OF REACH OF CHILDREN.

Oregon School Safety Officers Association
PO Box 1068 ■ Salem, Oregon ■ 97308 ■ 503-588-2800



Personal Protective Equipment

- Identification of Hazards
- Selection of Personal Protective Equip.
- Employee Training



Oregon School Safety Officers Association
PO Box 1068 ■ Salem, Oregon ■ 97308 ■ 503-588-2800



Equipment Safeguarding

- Guards protect employees from equipment hazards
- Gears, In-running Rollers, Chain and Sprocket Drives, Belts and Pulleys, Flywheels and other shear and pinch points.



Oregon School Safety Officers Association
PO Box 1068 ■ Salem, Oregon ■ 97308 ■ 503-588-2800



Bloodborne Pathogens

- Identification of employees who perform tasks with anticipated exposures to blood and other potentially infectious materials
- Employee Training
- Personal Protective Equipment
- Procedures to minimize risk of exposure
- Hepatitis B Vaccine
- Exposure Incident Procedures



Oregon School Safety Officers Association
PO Box 1068 ■ Salem, Oregon ■ 97308 ■ 503-588-2800



Asbestos Management Program

All employees will be informed annually of the health hazards of asbestos, the location and presence of asbestos containing materials and how to access asbestos information in their building's Asbestos Management Plan.



Oregon School Safety Officers Association
PO Box 1068 ■ Salem, Oregon ■ 97308 ■ 503-588-2800



Lockout – Tagout Program

- Lockout and Tagout of equipment energy sources when performing servicing and maintenance
- Affected and Authorized Employees
- Program Responsibilities and Requirements
- Employee Training
- Recordkeeping
- Program Evaluation

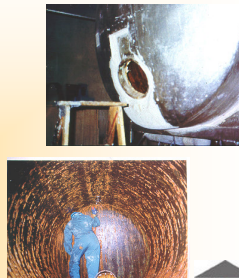


Oregon School Safety Officers Association
PO Box 1068 ■ Salem, Oregon ■ 97308 ■ 503-588-2800



Confined Space Entry Program

- Inventory of Confined Spaces
- Identify Entry Hazards
- Entry Permit Procedures
- Emergency Procedures



Oregon School Safety Officers Association
PO Box 1068 ■ Salem, Oregon ■ 97308 ■ 503-588-2800



Fall Protection Program

- When is Fall Protection Required?
- Employee Training
- PPE: Harnesses, Lanyards, Ropes, Rope Grabs, etc.
- Barriers and Guardrails
- Monitoring System



Oregon School Safety Officers Association
PO Box 1068 ■ Salem, Oregon ■ 97308 ■ 503-588-2800



Science Program Safety

- Safe handling and storage of chemicals and flammables.
- Personal Protective Equipment
- Emergency Procedures

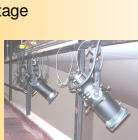


Oregon School Safety Officers Association
PO Box 1068 ■ Salem, Oregon ■ 97308 ■ 503-588-2800



Drama / Theater Program Safety

- Stage Rigging Systems
- Sound / Lighting / Electrical Systems
- Stage and Auditorium Emergency Exits
- Power Equipment and Hand Tool Safety
- Props and Scenery and Stage Extensions
- Orchestra Pits / Catwalks
- Drop Fire Curtains
- Housekeeping



Oregon School Safety Officers Association
PO Box 1068 ■ Salem, Oregon ■ 97308 ■ 503-588-2800



Shop Program Safety

- Shop Safety Procedures, Guarding, and Personal Protective Equip.

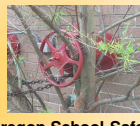
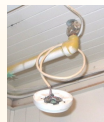


Oregon School Safety Officers Association
PO Box 1068 ■ Salem, Oregon ■ 97308 ■ 503-588-2800



Fire Protection Systems

- Fire sprinkler systems
- Fire detection / alarm systems
- Fire Doors
- Emergency Lighting



Oregon School Safety Officers Association
PO Box 1068 ■ Salem, Oregon ■ 97308 ■ 503-588-2800



Electrical Safety

- Communicate safe practices for electrical connections and for the safe operation of electrical equipment.



Oregon School Safety Officers Association
PO Box 1068 ■ Salem, Oregon ■ 97308 ■ 503-588-2800



Fork Lift Safety

- Employee Training
- Safe Operating Procedures



Oregon School Safety Officers Association
PO Box 1068 ■ Salem, Oregon ■ 97308 ■ 503-588-2800



Indoor Air Quality

- Causes of IAQ problems
- IAQ Control Plan
- IAQ Investigations
- IH Surveys
- Corrective Actions

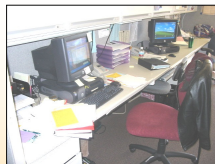


Oregon School Safety Officers Association
PO Box 1068 ■ Salem, Oregon ■ 97308 ■ 503-588-2800



Ergonomics

- Workstation Evaluations
- Chairs / Armrests
- Footrests
- Keyboards
- Keyboard Trays
- Wristrests
- Floor Mats



Oregon School Safety Officers Association
PO Box 1068 ■ Salem, Oregon ■ 97308 ■ 503-588-2800



Playground Environment

- Periodic documented inspections
- Maintenance
- Selection, Purchasing and Installation Procedures



Oregon School Safety Officers Association
PO Box 1068 ■ Salem, Oregon ■ 97308 ■ 503-588-2800

